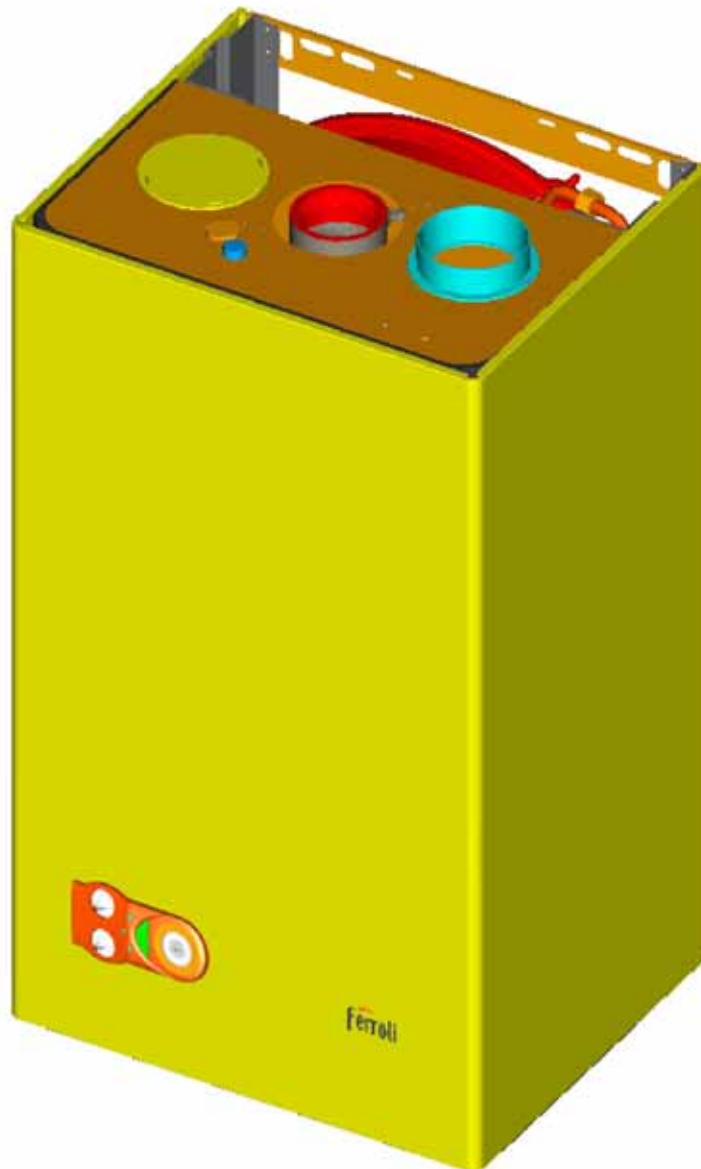




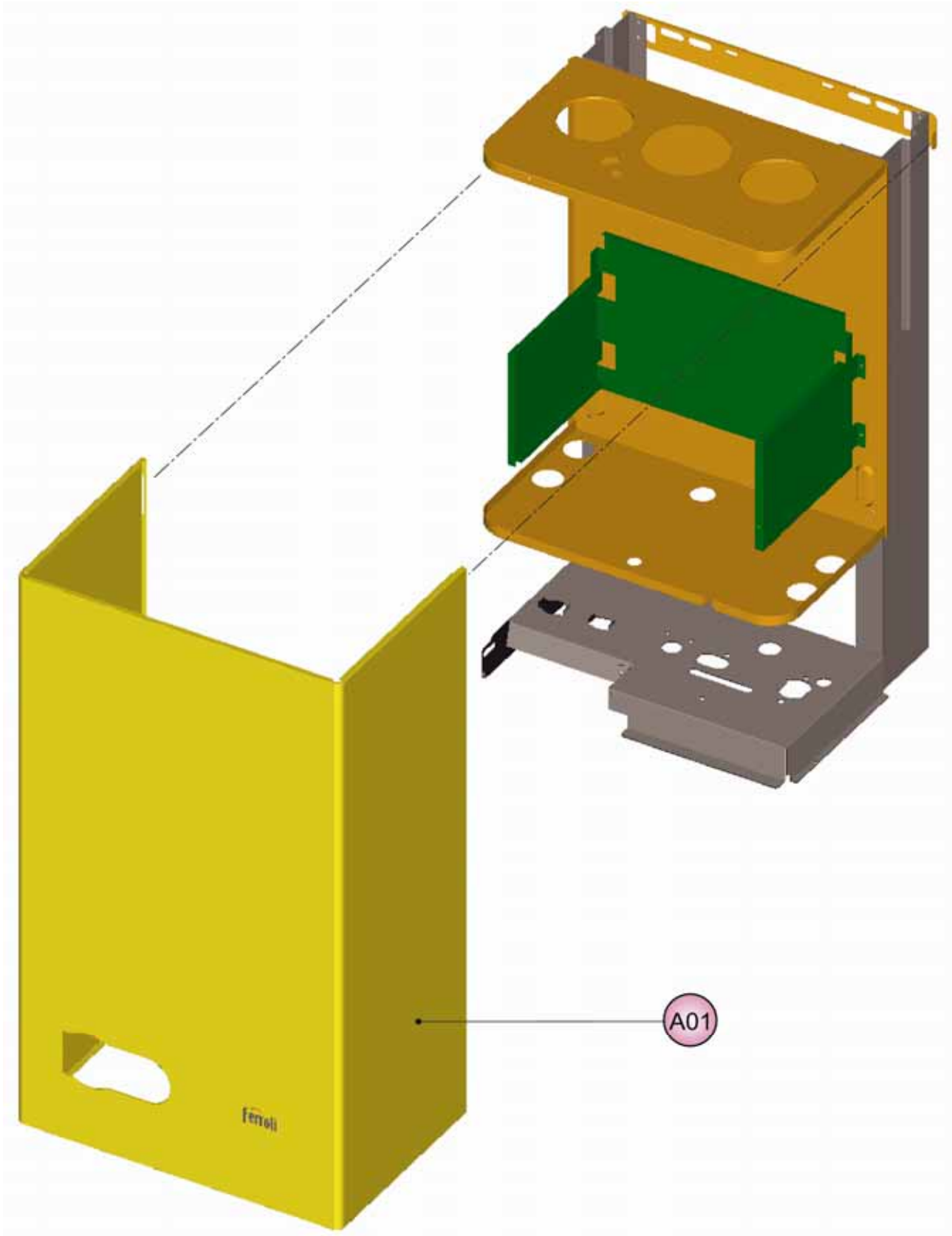
**Lista Pezzi / Spare Parts / Ersatzteile**  
**List Onderdelen / Liste Pieces Detaches / Lista Piezas De Repuesto**

## **DOMIproject F32**

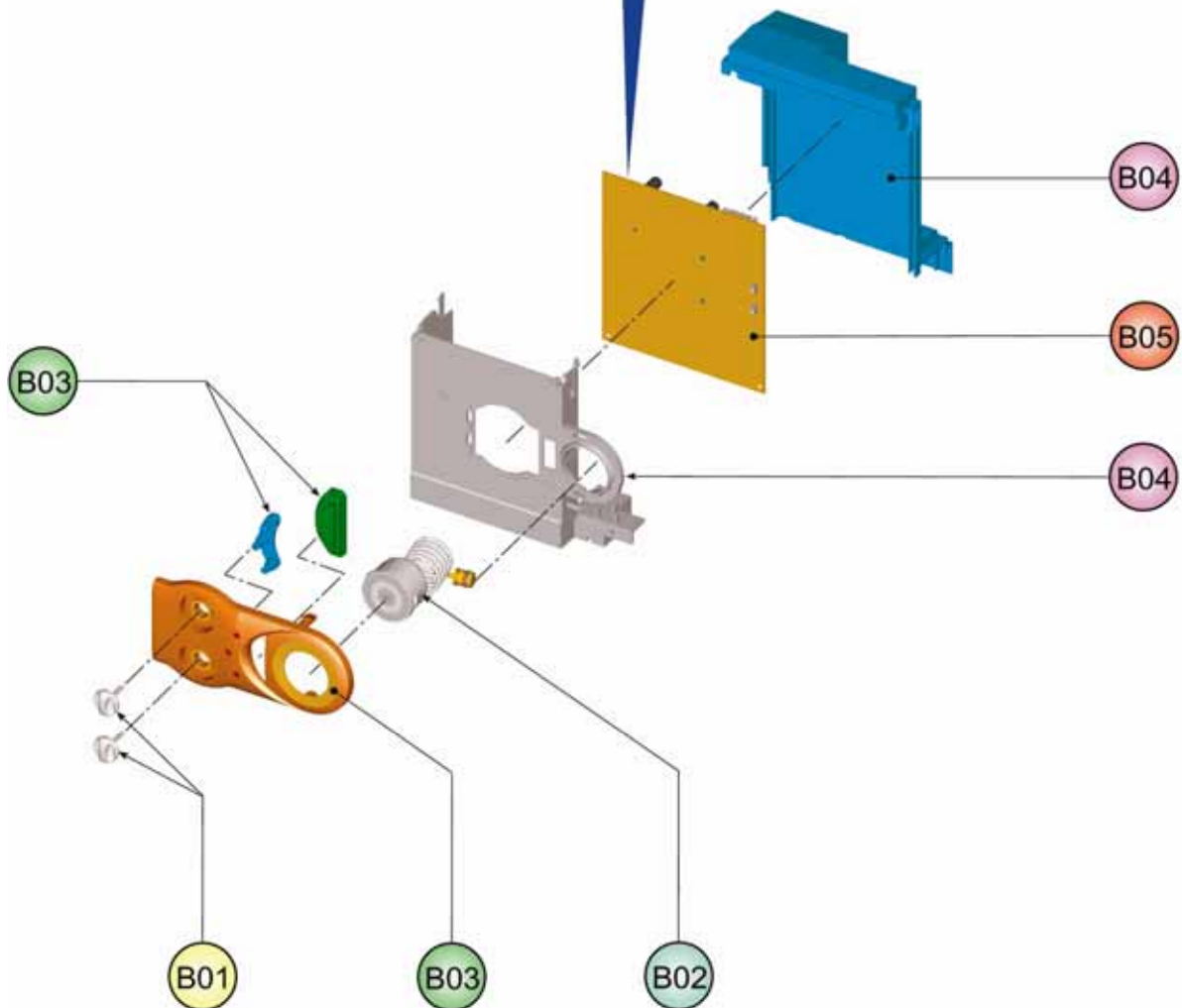
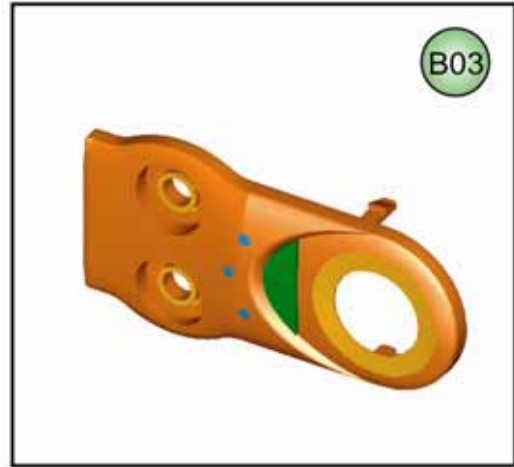
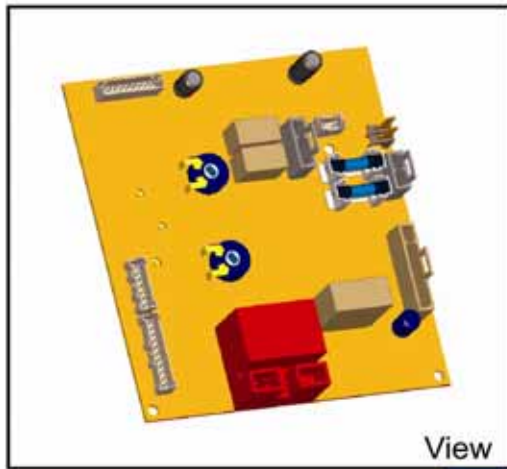


<b>CODICE</b>	<b>EDIZIONE</b>	<b>MERCATO</b>
<b>30K0283002</b>	<b>19/03/2007</b>	<b>A2-A3-A4-A5</b>

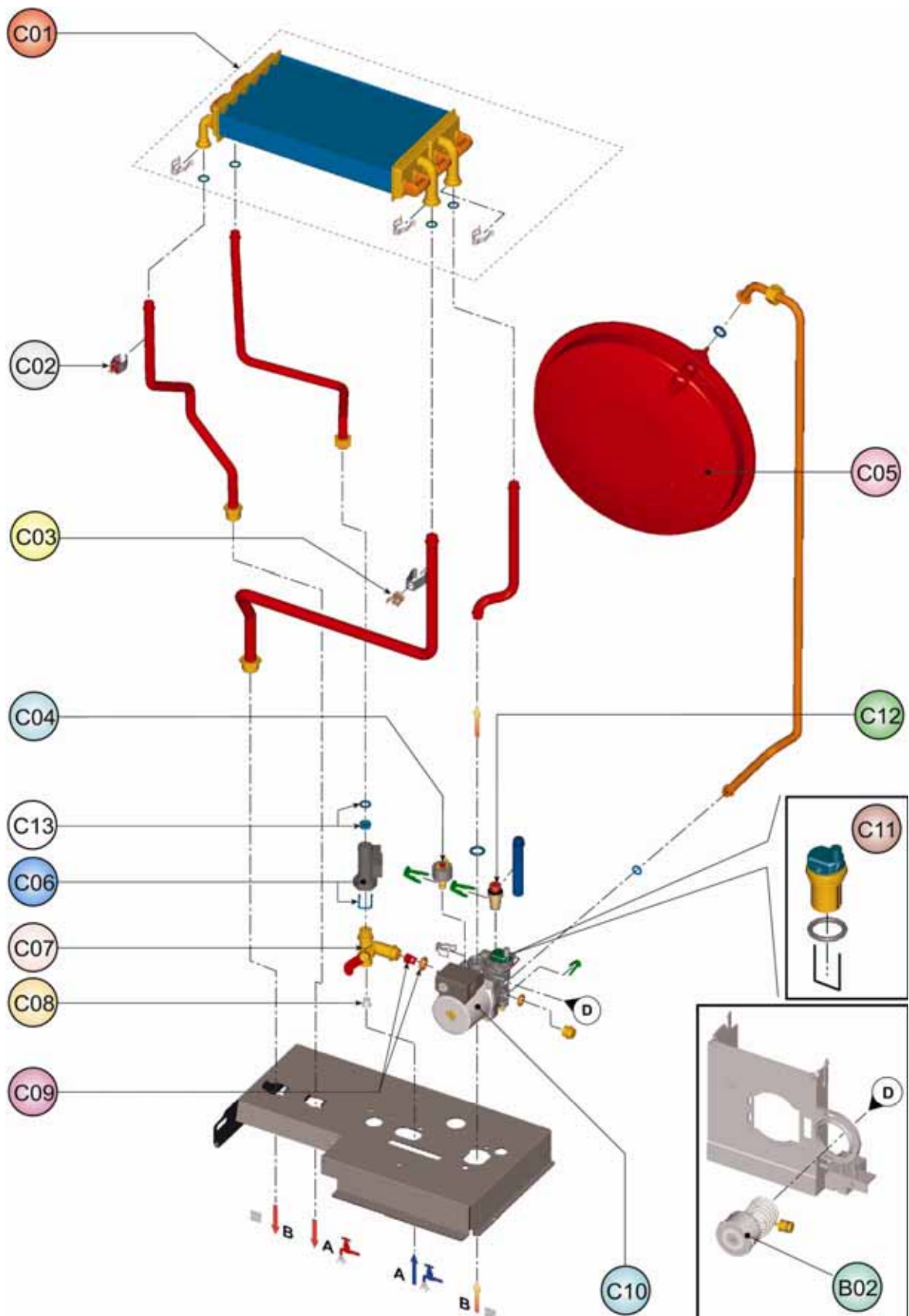
# DOMIproject F32



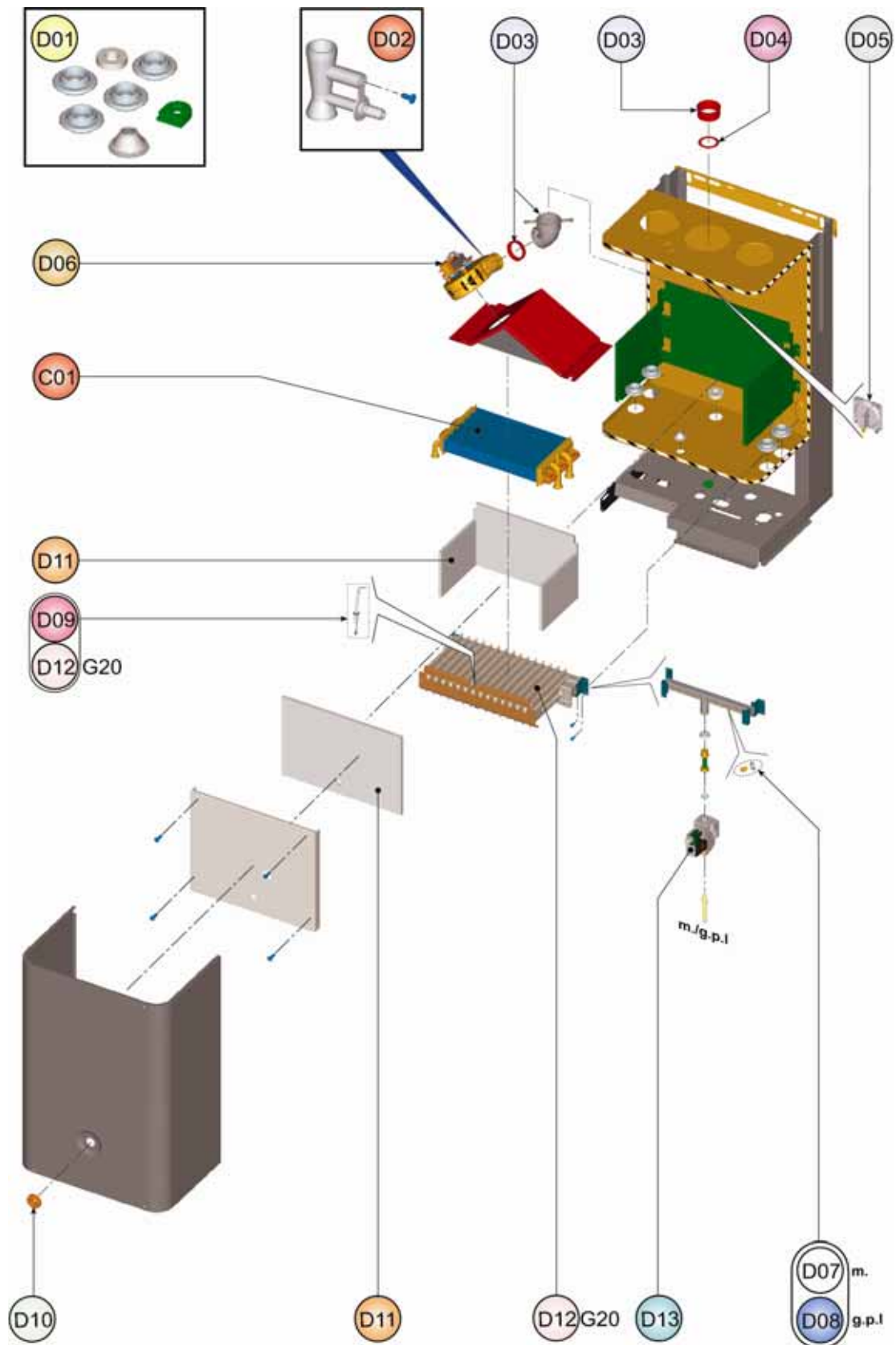
# DOMIproject F32



# DOMIproject F32



# DOMIproject F32





## DOMIproject F32

### LISTA PEZZI

### DOMIproject F32 m. (A2)

POS.	CODICE	DESC.	QT.
A01	39819660	KIT MANTELLO (31115970)	1.000
B01	39819500	KIT 2 MANOPOLE (35012090)	1.000
B02	39820080	KIT IDROMETRO (36402190)	1.000
B03	39819510	KIT MASCHERINA "FOL"(35011990)	1.000
B04	39819520	KIT SCATOLA EL. (35012240)	1.000
B05	39819530	KIT CENTRALINA EL. (36507990)	1.000
C01	39819670	KIT SCAMB.BITERM. (37404120)	1.000
C02	39819550	KIT SONDA TEMP. (36200730)	1.000
C03	39810230	KIT SONDA TEMP.SAN. (36200640)	1.000
C04	39818260	KIT PRESSOST.H2O (39404710)	1.000
C05	39809690	KIT VASO ESP.10Lt. (36802740)	1.000
C06	39818550	KIT FLUSSOST.ELTEK (36400710)	1.000
C07	39818280	KIT RUBIN.CARICO (36902150)	1.000
C08	39813230	KIT 5 FILTRI FLUSS. (39402940)	1.000
C09	39818230	KIT 5 VALV.N/R (39404740)	1.000
C10	39820900	KIT POMPA 15-60 FPL (36600150)	1.000
C11	39818220	KIT V.ARIA (39404380-39404730)	1.000
C12	39818270	KIT VALV.SIC. (39404720)	1.000
C13	39813220	KIT 5 REG.PORT.15Lt.(36902100)	1.000
D01	39819680	KIT GUARN.CALD. Sr.ABF7	1.000
D02	39808471	KIT PRESE (35101310-35101323)	1.000
D03	39817990	KIT CURVA USC.FUMI (33301610)	1.000
D04	39819690	KIT DIAFR.FUMI (32700870-890)	1.000
D05	39817510	KIT PRESS.DIFF.ARIA (36402050)	1.000
D06	39818021	KIT VENTIL. (36601872)	1.000
D07	39819700	KIT 15 UG.1,35 m. (34009821)	1.000
D09	39819430	KIT Elettrodo ACC. (36702890)	1.000
D10	39811330	KIT SPIA SILICONE (35102690)	1.000
D11	39819720	KIT ISOL.CAM.COMB.Sr.ABC7-ABF7	1.000
D12	39819730	KIT BRUC.15R.m. (37608931)	1.000
D13	39819620	KIT VALV.GAS (36800610)	1.000



## DOMIproject F32

### LISTA PEZZI

POS.	CODICE
A01	39819660
B01	39819500
B02	39820080
B03	39819510
B04	39819520
B05	39819530
C01	39819670
C02	39819550
C03	39810230
C04	39818260
C05	39809690
C06	39818550
C07	39818280
C08	39813230
C09	39818230
C10	39820900
C11	39818220
C12	39818270
C13	39813220
D01	39819680
D02	39808471
D03	39817990
D04	39819690
D05	39817510
D06	39818021
D07	39819700
D09	39819430
D10	39811330
D11	39819720
D12	39819730
D13	39819620

### DOMIproject F32 m. (A3)

DESC.	QT.
KIT MANTELLO (31115970)	1.000
KIT 2 MANOPOLE (35012090)	1.000
KIT IDROMETRO (36402190)	1.000
KIT MASCHERINA "FOL"(35011990)	1.000
KIT SCATOLA EL. (35012240)	1.000
KIT CENTRALINA EL. (36507990)	1.000
KIT SCAMB.BITERM. (37404120)	1.000
KIT Sonda TEMP. (36200730)	1.000
KIT Sonda TEMP.SAN. (36200640)	1.000
KIT PRESSOST.H2O (39404710)	1.000
KIT VASO ESP.10Lt. (36802740)	1.000
KIT FLUSSOST.ELTEK (36400710)	1.000
KIT RUBIN.CARICO (36902150)	1.000
KIT 5 FILTRI FLUSS. (39402940)	1.000
KIT 5 VALV.N/R (39404740)	1.000
KIT POMPA 15-60 FPL (36600150)	1.000
KIT V.ARIA (39404380-39404730)	1.000
KIT VALV.SIC. (39404720)	1.000
KIT 5 REG.PORT.15Lt.(36902100)	1.000
KIT GUARN.CALD. Sr.ABF7	1.000
KIT PRESE (35101310-35101323)	1.000
KIT CURVA USC.FUMI (33301610)	1.000
KIT DIAFR.FUMI (32700870-890)	1.000
KIT PRESS.DIFF.ARIA (36402050)	1.000
KIT VENTIL. (36601872)	1.000
KIT 15 UG.1,35 m. (34009821)	1.000
KIT Elettrodo ACC. (36702890)	1.000
KIT SPIA SILICONE (35102690)	1.000
KIT ISOL.CAM.COMB.Sr.ABC7-ABF7	1.000
KIT BRUC.15R.m. (37608931)	1.000
KIT VALV.GAS (36800610)	1.000



## DOMIproject F32

### LISTA PEZZI

POS.	CODICE
A01	39819660
B01	39819500
B02	39820080
B03	39819510
B04	39819520
B05	39819530
C01	39819670
C02	39819550
C03	39810230
C04	39818260
C05	39809690
C06	39818550
C07	39818280
C08	39813230
C09	39818230
C10	39820900
C11	39818220
C12	39818270
C13	39813220
D01	39819680
D02	39808471
D03	39817990
D04	39819690
D05	39817510
D06	39818021
D07	39819700
D09	39819430
D10	39811330
D11	39819720
D12	39819730
D13	39819620

### DOMIproject F32 m. (A4)

DESC.	QT.
KIT MANTELLO (31115970)	1.000
KIT 2 MANOPOLE (35012090)	1.000
KIT IDROMETRO (36402190)	1.000
KIT MASCHERINA "FOL"(35011990)	1.000
KIT SCATOLA EL. (35012240)	1.000
KIT CENTRALINA EL. (36507990)	1.000
KIT SCAMB.BITERM. (37404120)	1.000
KIT SONDA TEMP. (36200730)	1.000
KIT SONDA TEMP.SAN. (36200640)	1.000
KIT PRESSOST.H2O (39404710)	1.000
KIT VASO ESP.10Lt. (36802740)	1.000
KIT FLUSSOST.ELTEK (36400710)	1.000
KIT RUBIN.CARICO (36902150)	1.000
KIT 5 FILTRI FLUSS. (39402940)	1.000
KIT 5 VALV.N/R (39404740)	1.000
KIT POMPA 15-60 FPL (36600150)	1.000
KIT V.ARIA (39404380-39404730)	1.000
KIT VALV.SIC. (39404720)	1.000
KIT 5 REG.PORT.15Lt.(36902100)	1.000
KIT GUARN.CALD. Sr.ABF7	1.000
KIT PRESE (35101310-35101323)	1.000
KIT CURVA USC.FUMI (33301610)	1.000
KIT DIAFR.FUMI (32700870-890)	1.000
KIT PRESS.DIFF.ARIA (36402050)	1.000
KIT VENTIL. (36601872)	1.000
KIT 15 UG.1,35 m. (34009821)	1.000
KIT ELETTRODO ACC. (36702890)	1.000
KIT SPIA SILICONE (35102690)	1.000
KIT ISOL.CAM.COMB.Sr.ABC7-ABF7	1.000
KIT BRUC.15R.m. (37608931)	1.000
KIT VALV.GAS (36800610)	1.000



## DOMIproject F32

### LISTA PEZZI

POS.	CODICE
A01	39819660
B01	39819500
B02	39820080
B03	39819510
B04	39819520
B05	39819530
C01	39819670
C02	39819550
C03	39810230
C04	39818260
C05	39809690
C06	39818550
C07	39818280
C08	39813230
C09	39818230
C10	39820900
C11	39818220
C12	39818270
C13	39813220
D01	39819680
D02	39808471
D03	39817990
D04	39819690
D05	39817510
D06	39818021
D07	39819700
D09	39819430
D10	39811330
D11	39819720
D12	39819730
D13	39819620

### DOMIproject F32 m. (A5)

DESC.	QT.
KIT MANTELLO (31115970)	1.000
KIT 2 MANOPOLE (35012090)	1.000
KIT IDROMETRO (36402190)	1.000
KIT MASCHERINA "FOL"(35011990)	1.000
KIT SCATOLA EL. (35012240)	1.000
KIT CENTRALINA EL. (36507990)	1.000
KIT SCAMB.BITERM. (37404120)	1.000
KIT SONDA TEMP. (36200730)	1.000
KIT SONDA TEMP.SAN. (36200640)	1.000
KIT PRESSOST.H2O (39404710)	1.000
KIT VASO ESP.10Lt. (36802740)	1.000
KIT FLUSSOST.ELTEK (36400710)	1.000
KIT RUBIN.CARICO (36902150)	1.000
KIT 5 FILTRI FLUSS. (39402940)	1.000
KIT 5 VALV.N/R (39404740)	1.000
KIT POMPA 15-60 FPL (36600150)	1.000
KIT V.ARIA (39404380-39404730)	1.000
KIT VALV.SIC. (39404720)	1.000
KIT 5 REG.PORT.15Lt.(36902100)	1.000
KIT GUARN.CALD. Sr.ABF7	1.000
KIT PRESE (35101310-35101323)	1.000
KIT CURVA USC.FUMI (33301610)	1.000
KIT DIAFR.FUMI (32700870-890)	1.000
KIT PRESS.DIFF.ARIA (36402050)	1.000
KIT VENTIL. (36601872)	1.000
KIT 15 UG.1,35 m. (34009821)	1.000
KIT Elettrodo ACC. (36702890)	1.000
KIT SPIA SILICONE (35102690)	1.000
KIT ISOL.CAM.COMB.Sr.ABC7-ABF7	1.000
KIT BRUC.15R.m. (37608931)	1.000
KIT VALV.GAS (36800610)	1.000

